



Electromantle™

Electromantle™

Heating Mantle Range

Heating mantles

Stirring mantles

Spill proof mantles

Mantles for funnels

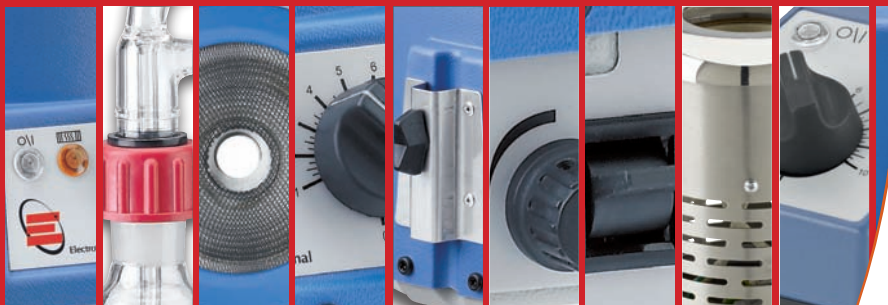
Chemically resistant

Improved safety

Cool-to-the-touch design

Electric Bunsens

Controllers



EM Heating Mantles

Introducing the Electromantle™

Our aim is to produce heating mantles that give users the benefit of our extensive knowledge in this field coupled with the reliability we have all come to expect and enjoy. By calling on our years of experience and our thirst for continuous improvement we are able to provide robust economical products that serve many different applications and industries.

- Cool-to-the-touch design.
- Element temperature 450°C
- Built-in energy regulator
- Replaceable insulated heater cartridge
- Indicator lamps for power and heater operation
- A chemically resistant plastic outer casing
- A grounded earth screen and double fuses for added safety



Robust and economical

Designed with simplicity, flexibility and ease of use

The EM series Electromantle™ is designed to be the work horse for your heating applications. Designed with simplicity, ease of use and flexibility in mind the EM series can perform many heating tasks in the busy laboratory. All EMs have a built in energy regulator with indicator lamps for power and heater operation. All mantles have support rod clamps designed in as an integral feature. All mantles incorporate a grounded earth screen and double fuses for added safety. Larger capacity products have multiple heating elements enabling a more even and accurate transfer of heat.

For more information, please visit: www.electrothermal.com



Follow Electrothermal on FaceBook! www.facebook.com/pages/Electrothermal/147689705303308



EMA Heating Mantles

Introducing the stirring Electromantle™

The EMA stirring Electromantle™ shares all the standard features of the standard EM but has the added functionality of magnetic stirring. The solid state stirring circuitry is built into the base of the main housing and provides powerful stirring over a range of capacities and viscosities. The stir speed is easily adjusted and is bi-directional. The stir bar is seldom lost due to our "auto-recapture" function.

- Bi-directional stirring speeds up to 520rpm
- Stir bar "auto-recapture" function
- Cool-to-the-touch design
- Element temperature 450°C
- Built-in energy regulator
- Replaceable insulated heater cartridge
- Indicator lamps for power and heater operation
- A chemically resistant plastic outer casing
- A grounded earth screen and double fuses for added safety

Magnetic stirring

Solid state magnetic stirring

The EMA stirring Electromantle™ has the added functionality of in solution stirring which widens the range of applications. Stirring operation is simply achieved by placing the correct size stir bar into the flask, turning the stir control to the minimum speed and ramping up slowly.

If the magnetic coupling to the stir bar is lost for any reason the speed control should be reduced slightly and the auto-recapture switch can be activated.



For more information, please visit: www.electrothermal.com

Follow Electrothermal on Twitter! www.twitter.com/electrothermal

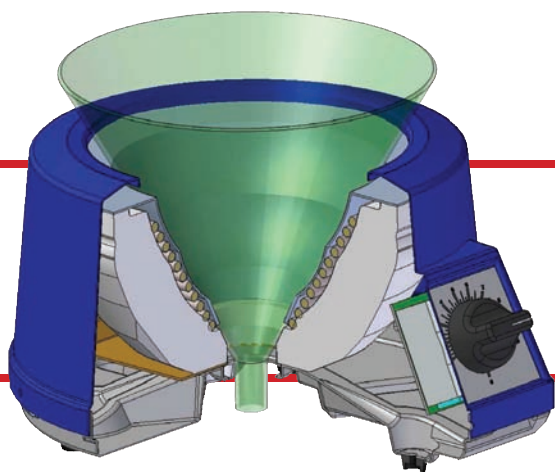


EMV and EMX Heating Mantles

Spill-proof and V-shaped Electromantle™

The EMX and EMV Electromantle™ share the standard features of the standard EM but have the added functionality of a bottom opening which allows 60° funnels of various sizes to be heated.

- Accommodates 60° funnels of various diameters
- Cool-to-the-touch design
- Element temperature 450°C
- Built-in energy regulator
- Replaceable insulated heater cartridge
- Indicator lamps for power and heater operation
- A chemically resistant plastic outer casing
- A grounded earth screen and double fuses for added safety



EMV

V-Shaped Mantle

Stainless steel mesh screen on all EMV models cover the heated elements to protect you from shock hazards due to spills or flask breakage.

EMX

Spill-proof Mantle

Stainless steel liner on all EMX models provides electrical and mechanical protection against spills and ensures easy cleaning.

For more information, please visit: www.electrothermal.com



Follow Electrothermal on YouTube! www.youtube.com/bibbyscientific

Key features

- Conical shaped heating element directs radiant heat to the top cavity
- Top cowl deflects heat away from your hand
- Air circulation from the vented housing keeps the base cool enough to hold during operation
- Burner consumes only 400W of power
- Recommended controller, MC5
- One year warranty parts and labour



Electric Bunsen

Electrothermal Electric Bunsens combine the advantages of a regular gas burner with the clean, easy operation of our electric heaters. Corrosion-resistant and cool-to-the-touch base. Radiation from the heater is directed upwards to a focal point. The Electric Bunsen is ideal for heating test tubes, crucibles, small flasks and beakers, regardless of their shape.

MC5 Controller

The MC5 Controller has been designed to provide a comprehensive answer to control the heating of resistive loads such as Electric Bunsen, Heating Mantles, Heating Tapes and Cords for bench top operation delivering up to a maximum of 800 watts. A rod support clamp is provided at the rear of the controller to take a standard 12.5mm diameter rod. An accessory extension mains lead is available where remote operation is required e.g. in a fume extraction unit.

Ordering information

Bunsen Without Controller	Electrical supply
BA6101	230V 50/ 60Hz, 480W
BA6101X1	115v 50/ 60Hz, 430W

Controller	Electrical supply
MC5	230V
MC5X1	115V, US Plug

Bunsen With Controller	Electrical supply
BA6101/C	230v 50/ 60Hz, 480W
BA6101/CX1	115v 50/ 60Hz, 430W



For more information, please visit: www.electrothermal.com

Follow Electrothermal on Twitter! www.twitter.com/electrothermal



Technical information

EM Series Electromantle™

Model	Capacity	Electrical Requirement
EM0050/CE	50ml	230v 50/60Hz, 60w
EM0050/CEX1	50ml	115v 50/60Hz, 70w
EM0100/CE	100ml	230v 50/60Hz, 60w
EM0100/CEX1	100ml	115v 50/60Hz, 70w
EM0250/CE	250ml	230v 50/60Hz, 150w
EM0250/CEX1	250ml	115v 50/60Hz, 150w
EM0500/CE	500ml	230v 50/60Hz, 200w
EM0500/CEX1	500ml	115v 50/60Hz, 200w
EM1000/CE	1000ml	230v 50/60Hz, 300w
EM1000/CEX1	1000ml	115v 50/60Hz, 300w
EM2000/CE	2000ml	230v 50/60Hz, 500w
EM2000/CEX1	2000ml	115v 50/60Hz, 500w
EM3000/CE	3000ml	230v 50/60Hz, 500w
EM3000/CEX1	3000ml	115v 50/60Hz, 500w
EM5000/CE	5000ml	230v 50/60Hz, 800w
EM5000/CEX1	5000ml	115v 50/60Hz, 800w

EMA Series Electromantle™

Model	Capacity	Electrical Requirement
EMA0050/CEB	50ml	230v 50/Hz, 80w
EMA0050/CEBX1	50ml	115v 50/60Hz, 96w
EMA0100/CEB	100ml	230v 50/60Hz, 80w
EMA0100/CEBX1	100ml	115v 50/60Hz, 96w
EMA0250/CEB	250ml	230v 50/60Hz, 170w
EMA0250/CEBX1	250ml	115v 50/60Hz, 210w
EMA0500/CEB	500ml	230v 50/60Hz, 220w
EMA0500/CEBX1	500ml	115v 50/60Hz, 270w
EMA1000/CEB	1000ml	230v 50/60Hz, 320w
EMA1000/CEBX1	1000ml	115v 50/60Hz, 400w
EMA2000/CEB	2000ml	230v 50/60Hz, 520w
EMA2000/CEBX1	2000ml	115v 50/60Hz, 595w

EMV Series Electromantle™

Model	Capacity	Electrical Requirement
EMV0050/CE	10 to 50ml	230v 50/60Hz, 60w
EMV0050/CEX1	10 to 50ml	115v 50/60Hz, 75w
EMV0250/CE	100 to 250ml	230v 50/60Hz, 150w
EMV0250/CEX1	100 to 250ml	115v 50/60Hz, 150w
EMV1000/CE	500 to 1000ml	230v 50/60Hz, 300w
EMV1000/CEX1	500 to 1000ml	115v 50/60Hz, 300w
EMV5000/CE	2000 to 5000ml	230v 50/60Hz, 800w
EMV5000/CEX1	2000 to 5000ml	115v 50/60Hz, 800w

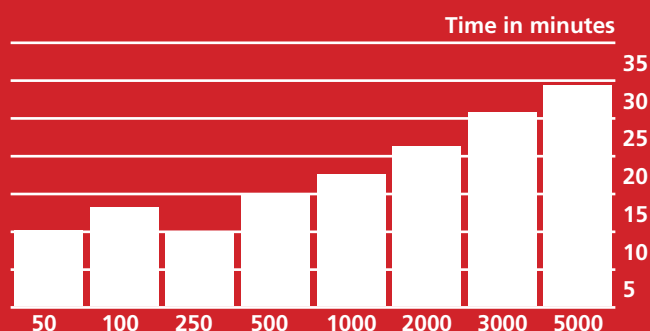
EMX Series Electromantle™

Model	Capacity	Electrical Requirement
EMX1000/SCE	500 to 1000ml	230v 50/ 60Hz, 245w
EMX1000/SCEX1	500 to 1000ml	115v 50/ 60Hz, 240w
EMX5000/SCE	2000 to 5000ml	230v 50/ 60Hz, 600w
EMX5000/SCEX1	2000 to 5000ml	115v 50/ 60Hz, 600w

Technical information

Boiling time

The bar graph illustrates the time required for a half filled flask of water to reach boiling point in each of the flask capacities. For all the boiling tests the ambient temperature was 17°C.



General specification

Maximum element temp:	450°C
Voltage:	115V or 230V AC
Wattage:	See table for nominal wattage of each flask capacity at rated voltage.
Indicator lights:	Clear for power. Amber for heater
Support Rod Clamp:	For 12.7mm (1/2") diameter support rods

Also available in the Electrothermal range



EM Controlled Electromantle™

EM Electromantle™ heating mantles are used in wet chemistry to heat liquids in round bottom flasks. The plastic case is designed to remain "cool-to-the-touch" when in operation. Electrothermal heating mantles have a grounded stainless steel earth screen covering the element and are double fused for added safety.



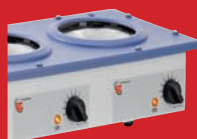
EMA Electromantle™ Heating and Stirring Mantles

EMA models have all the features of the EM range of heating mantles with the addition of variable speed stirring in single direction or auto reverse modes.



EMV and EMX 'V' Shaped Electromantle™

EMV heating mantles accept a large range of flask and funnel sizes and are available with extra spill-proof protection as the EMX range.



EME Extraction Heaters

The Electromantle™ extraction heaters are available with six or three recesses and feature a durable chemically resistant polypropylene top casing. All versions have built in electronic controllers and a wide range of flask sizes can be accommodated, with or without stirring.



Macro Kjeldahl

The Macro-Kjeldahl Extraction Heaters accept volume sizes from 80 to 800ml. Individual built-in controllers regulate quartz fibre heating elements up to 550°C to 800°C. These multibank units have a stainless steel housing that accepts an integral glassware support.



Micro Kjeldahl

The Micro-Kjeldahl Extraction Heaters accept volume sizes from 18 to 50ml. Individual built-in controllers regulate quartz fibre heating elements up to 550°C to 800°C. These multibank units have a stainless steel housing that accepts an integral glassware support.



Controllers

The Electrothermal Controllers include a range of models for single, double and triple place and percentage off/on. Controller line includes the ideal controller to pair with your heating mantles, mats and tapes.



Contact

Bibby Scientific - UK (Group HQ)

Beacon Road, Stone, Staffordshire, ST15 0SA,
United Kingdom

T: +44 (0)1785 812121

F: +44 (0)1785 813748

E: sales@bibby-scientific.com

Bibby Scientific France SAS

Bâtiment le Deltaparc PN II, 7 rue du canal
BP 55437 Villepinte, 95944 ROISSY Cdg

T: 00 33 (0) 6 08 54 19 55

E: bsf@bibby-scientific.fr

Bibby Scientific - US

3 Terri Lane, Suite 10, Burlington, NJ 08016, USA

T: +1 609 589 2560

F: +1 609 589 2571

E: labproducts@techneusa.com

Bibby Scientific - Middle East

PO Box 27842 Engomi 2433 Nicosia, Cyprus

T: +357 22 660 423

F: +357 22 660 424

E: sales@bibby-scientific.me

Bibby Scientific Singapore

Prudential Tower, Level 26, 30 Cecil Street,
Singapore 049712

T: +65 6631 2976

F: +44 (0) 1785 810405

E: sales@bibby-scientific.com